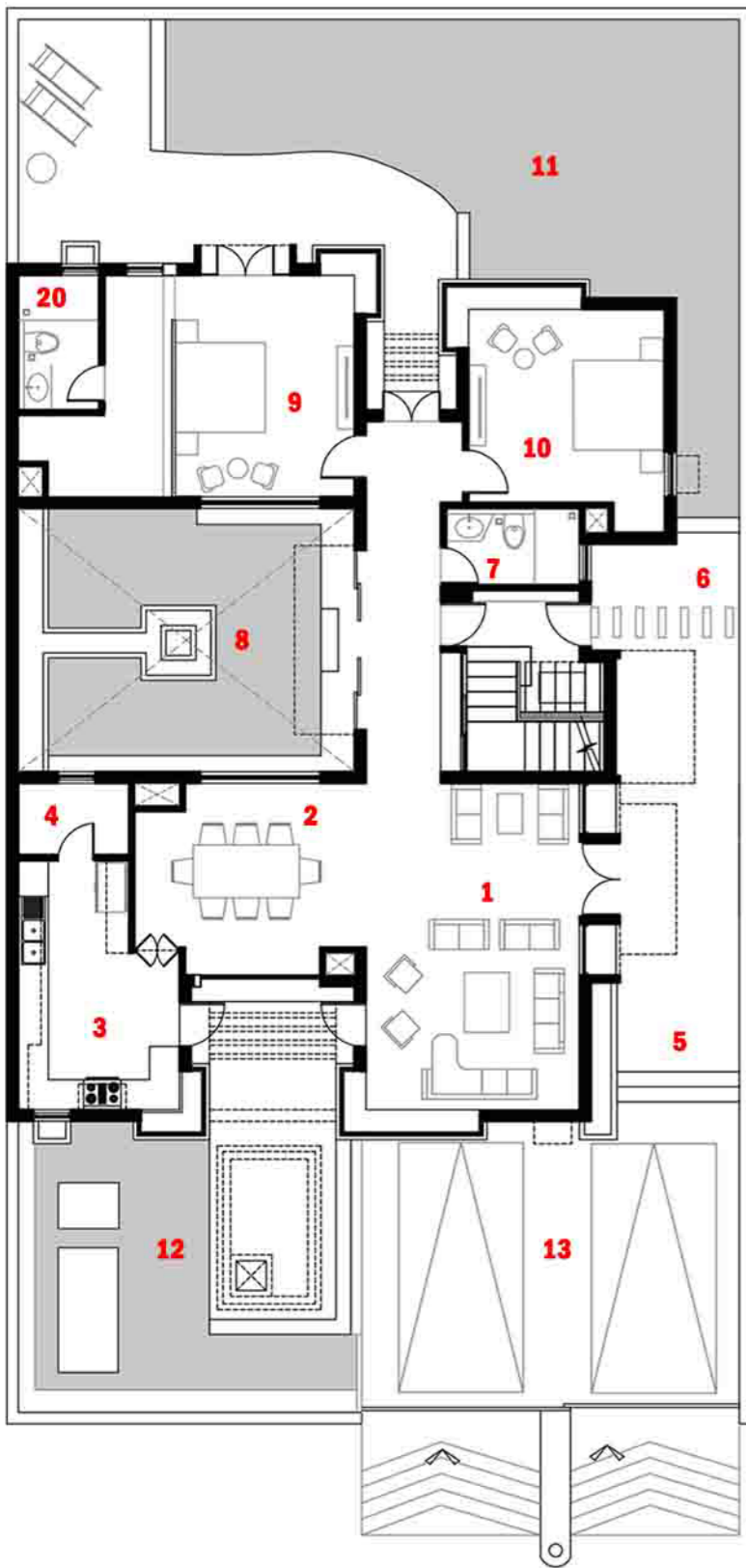




# PORTFOLIO

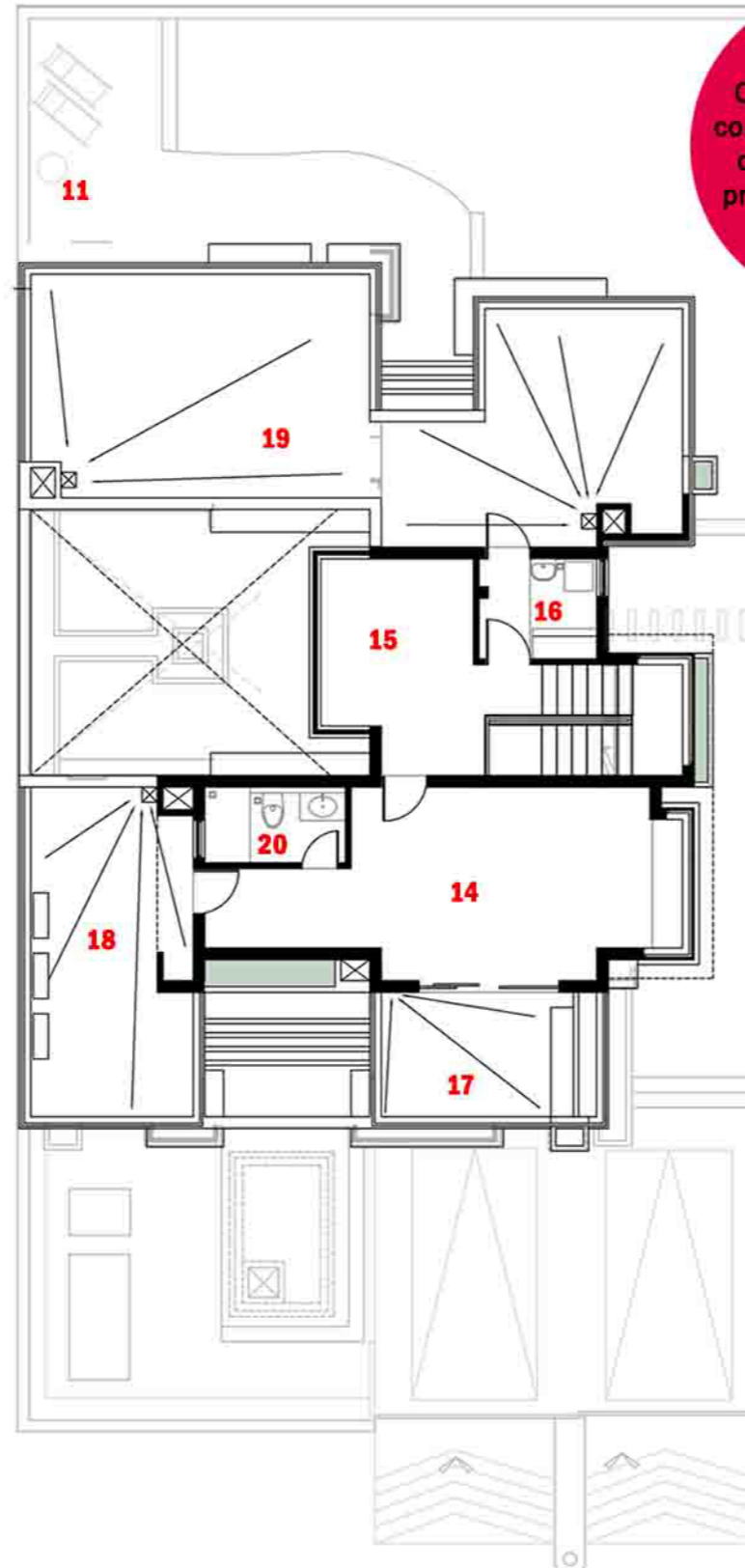
---

## RITUPARNA GUHA



**GROUND FLOOR**

- 1. LIVING ROOM
- 2. DINNING ROOM
- 3. KITCHEN
- 4. STORE
- 5. ENTRANCE
- 6. PUJA LOBBY
- 7. TOILET
- 8. COURTYARD
- 09. MASTERBEDROOM
- 10. BEDROOM I
- 11. REAR GARDEN
- 12. FRONT GARDEN
- 13. PARKING



**FIRST FLOOR**

- 14. STUDIO
- 15. LIBRARY
- 16. PANTRY
- 17. PRIVATE TERRACE
- 18. EXPANSION PROVISION
- 19. COMMON TERRACE
- 20. ATTACHED TOILET

**CONTRIBUTION**  
Core planning and concept development of the design. Also prepared the design till tender stage.

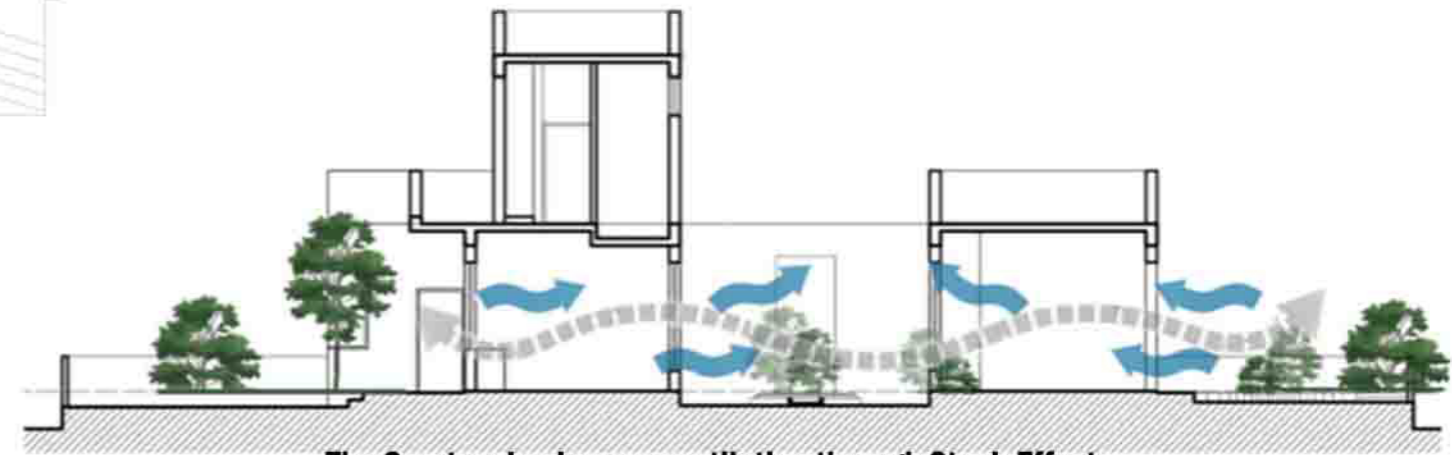


# 01 ANTHONY RESIDENCE

Studio CoDe , June 2015 - Novemeber 2015.

Project Architect

The evolution of the form of this residence was a culmination of approach towards the climate in terms of natural light and ventilation. Designing a three bedroom unit for a three member nuclear family with spacious layout closer to the greens. Being a Tropical House , the courtyard is one of the major feature which binds the house.



**The Courtyard enhances ventilation through Stack Effect.**

The volume of emptiness which is placed inbetween two cubes initiates the stack effect. Apart from the climatic advantage , it also adds to the openness of the space where one can connect with the sky and daylight. Also this open courtyard helps distribute light all around it. A truly tropical feature with multiple functions and aesthetics.

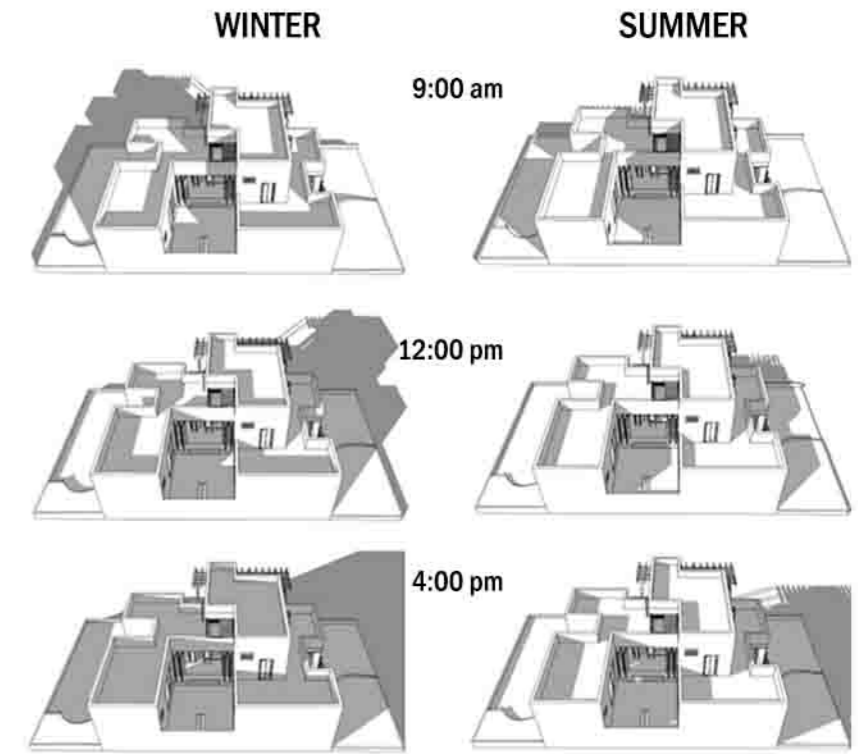
## Massing and blocking options

There were many volumes which were projecting and creating niches and voids. These volumes were shaped into a massing scheme. Also being a tropical house, the clients preferred staying closer to the green spaces, which gave a different texture combination to the masses.



## Shadow Analysis

After building the blocks, the shadow analysis helped us get a clearer idea about the effect of climate on the spaces. Accordingly some inclusions were made to make the most of the available site.



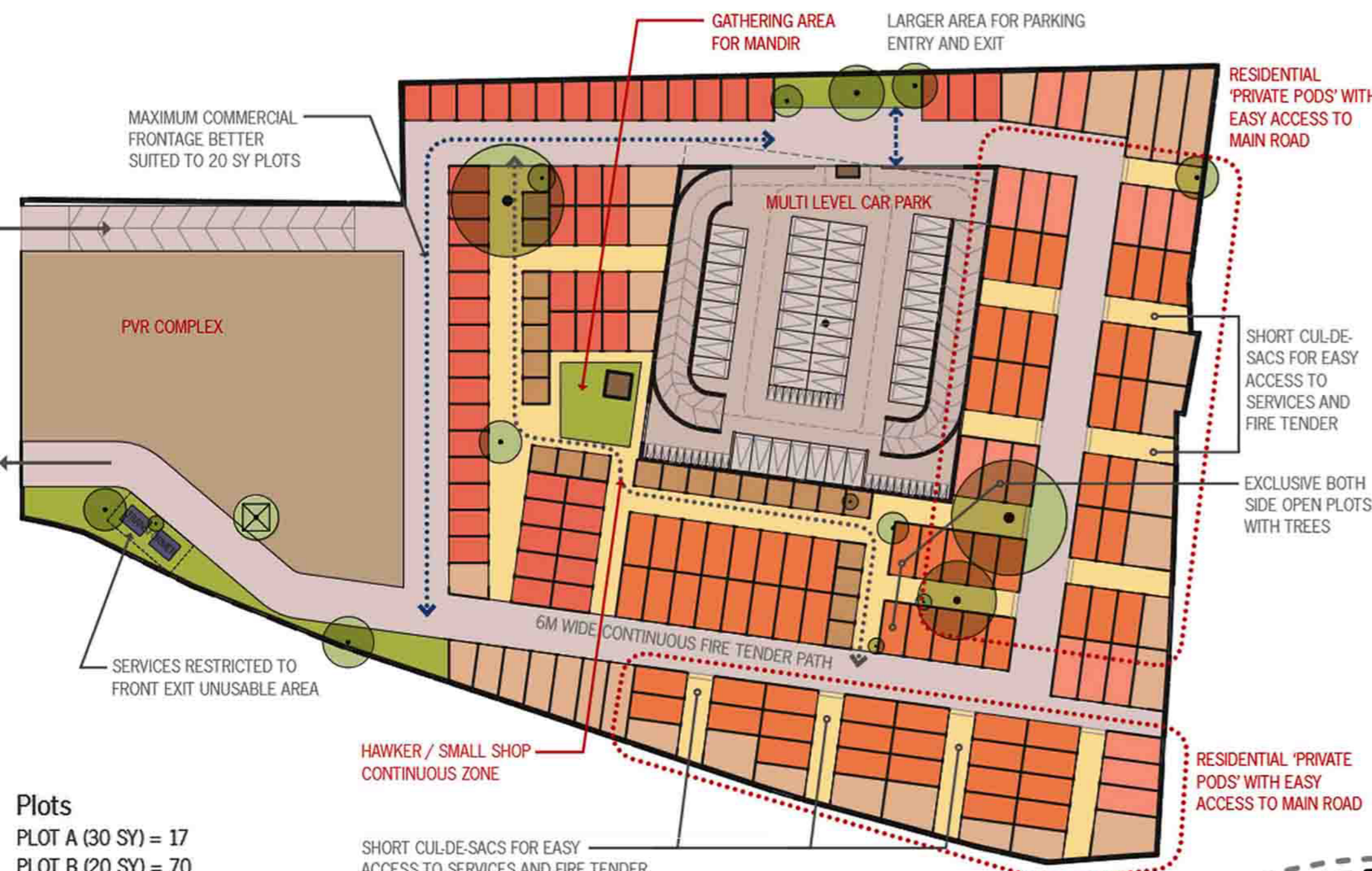
### Outdoor seating

Slabs have been extended to form alcoves and storage, at the same time provides seating on the other side. These seaters have helped the narrow lobby space a multifunctional area.



### Courtyard

The Internal court is the key element with jutting out slabs proving seating spaces. This continuation of the floor slab into the court gives a floating feel to the building.



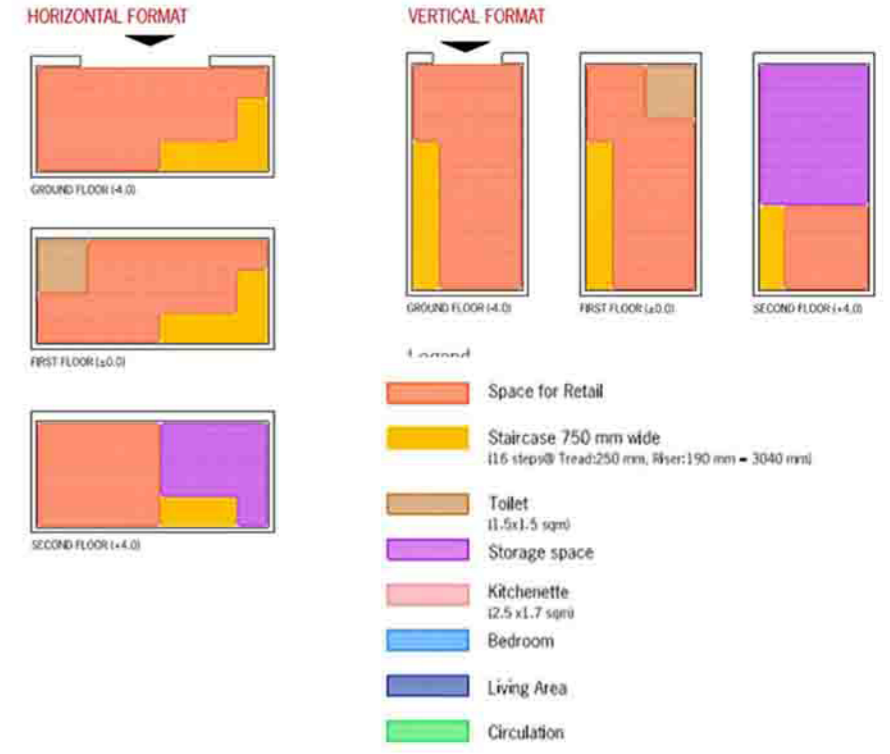
**Plots**  
 PLOT A (30 SY) = 17  
 PLOT B (20 SY) = 70  
 PLOT C (>30 SY) = 54  
 PLOT D (<20 SY) = 23  
 UNIQUE SHOPS = 31  
 TOTAL PLOTS = 195  
 (\*PREVIOUSLY 178 IN SIMILAR AREA)

**Parking**  
 MULTI-LEVEL CAR PARKING  
 ONE LEVEL X 5 FLOORS = 43 X 5  
 TOTAL CAR PARKING = 215  
 MULTI-LEVEL SCOOTER PARKING  
 ONE LEVEL X 5 FLOORS = 32 X 5  
 TOTAL TWO WHEELER PARKING = 160

- PLOT TYPE A (3.5M X 8.25M)
- PLOT TYPE B (3.5M X 7.5M)
- PLOT TYPE C (3.5M X 5.25M)
- PLOT TYPE D (3.5M X 3.5M)
- UNIQUE PLOT
- PVR
- ROAD SURFACE
- PEDESTRIAN PATH
- SERVICES

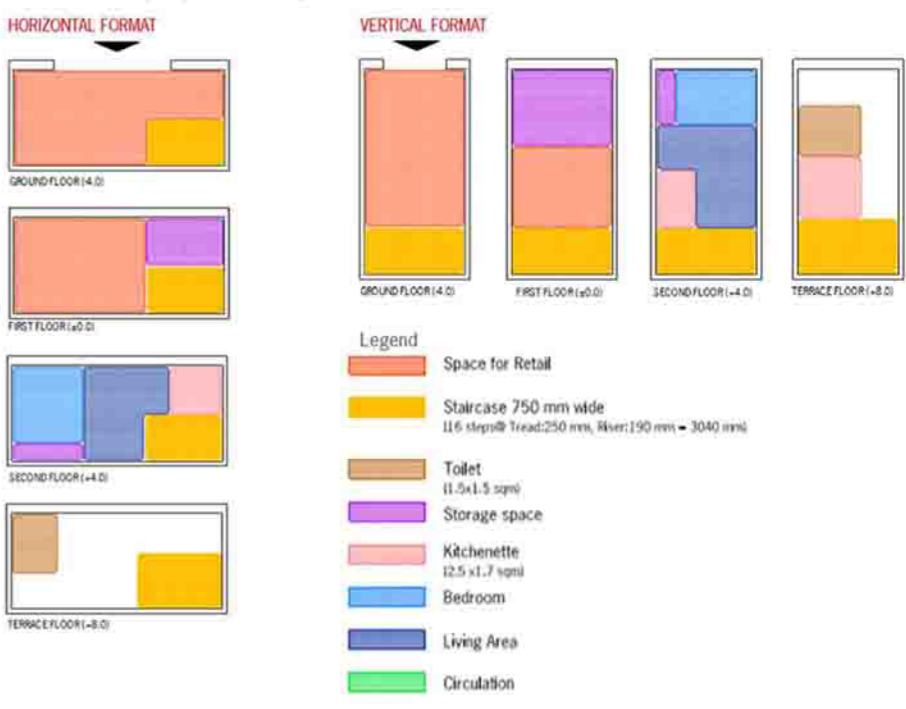
**Typology Study Commercial Unit**

Dimensions: 7.0m x 3.5m  
 Area: 24.5 Sq.m / 29.30 Sq. Yards



**Typology Study Mixed Use Unit - Revised**

Dimensions: 7.0m x 3.5m  
 Area: 24.5 Sq.m / 29.30 Sq. Yards



**CONTRIBUTION**  
 Planning and typology options.  
 Design formulation along with presentation drawings.

**02**

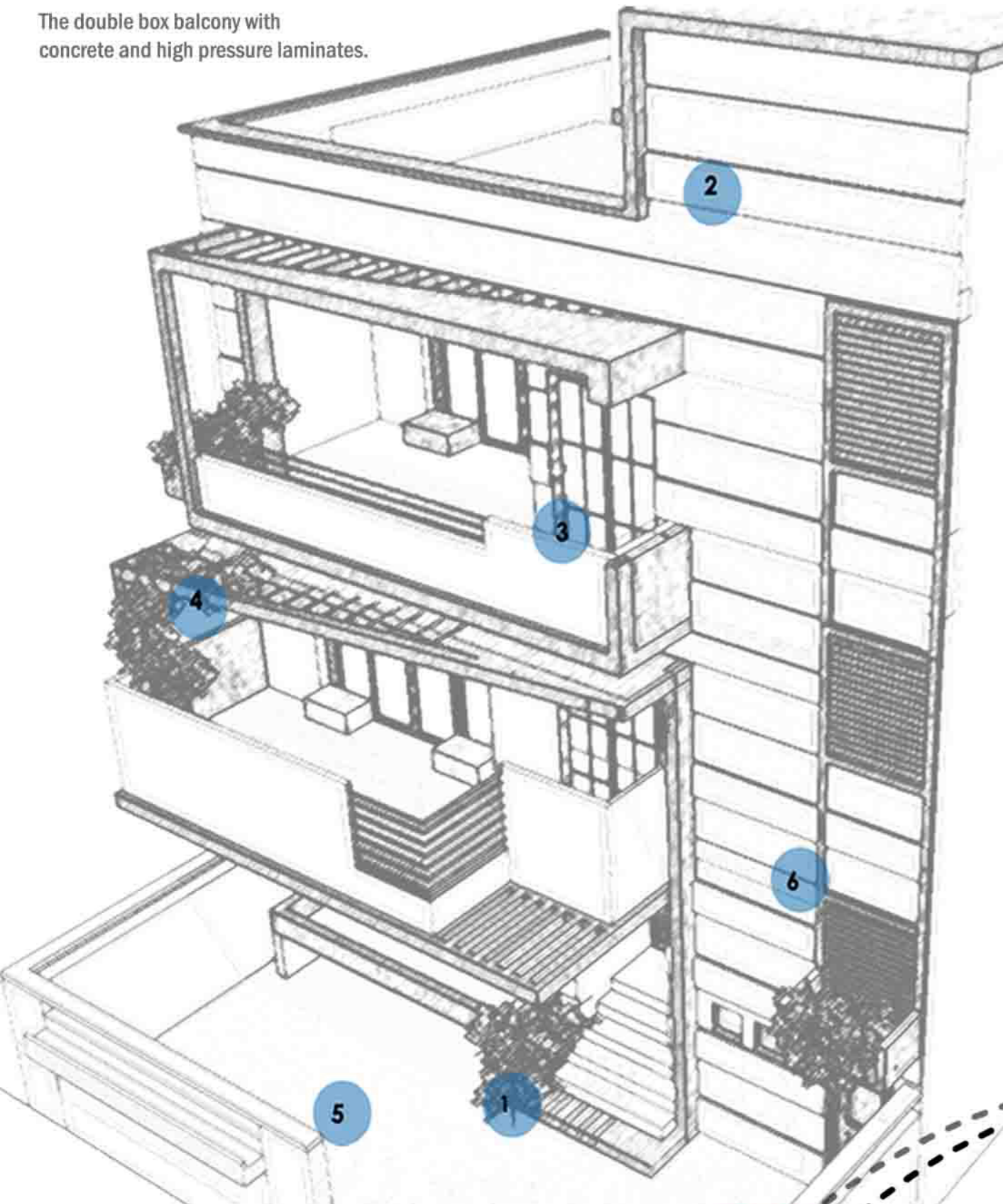
**HARRISGANJ MASTERPLAN-KANPUR**

Studio CoDe , Dec 2014 - June 2015.  
 Project Architect

This was a mini scale masterplan for a lower middle income group commercial area. There were a lot of issues due to which the ground coverage had to be maximised as much as possible..The main issues which arised during the design process, was the space constraint. Also there were catagories and typologies suggested as guidelines for the development..

## Option 1

The double box balcony with concrete and high pressure laminates.



1. ENTRY WITH PLANTER
2. TERRACE BALCONY REMOVED
3. BALCONIES CONJOINED
4. SUNSHADE PERGOLA
5. PARKING SPACE
6. DHOLPUR GRIT FINISH

**CONTRIBUTION**  
Developing an option with all the feedback from the client, and choosing the material appropriate for the same.

## Considerations

### Balcony Railing

The balcony was manually blocked to prevent visibility and dust from entering. Since the residence is located on the main road there were many negative repercussions for transparency.



### Midlanding balcony

The balconies on every midlanding are extremely small and unusable. Hence it was desirable in transforming it with a light jali work to enhance the lighting in the staircase.



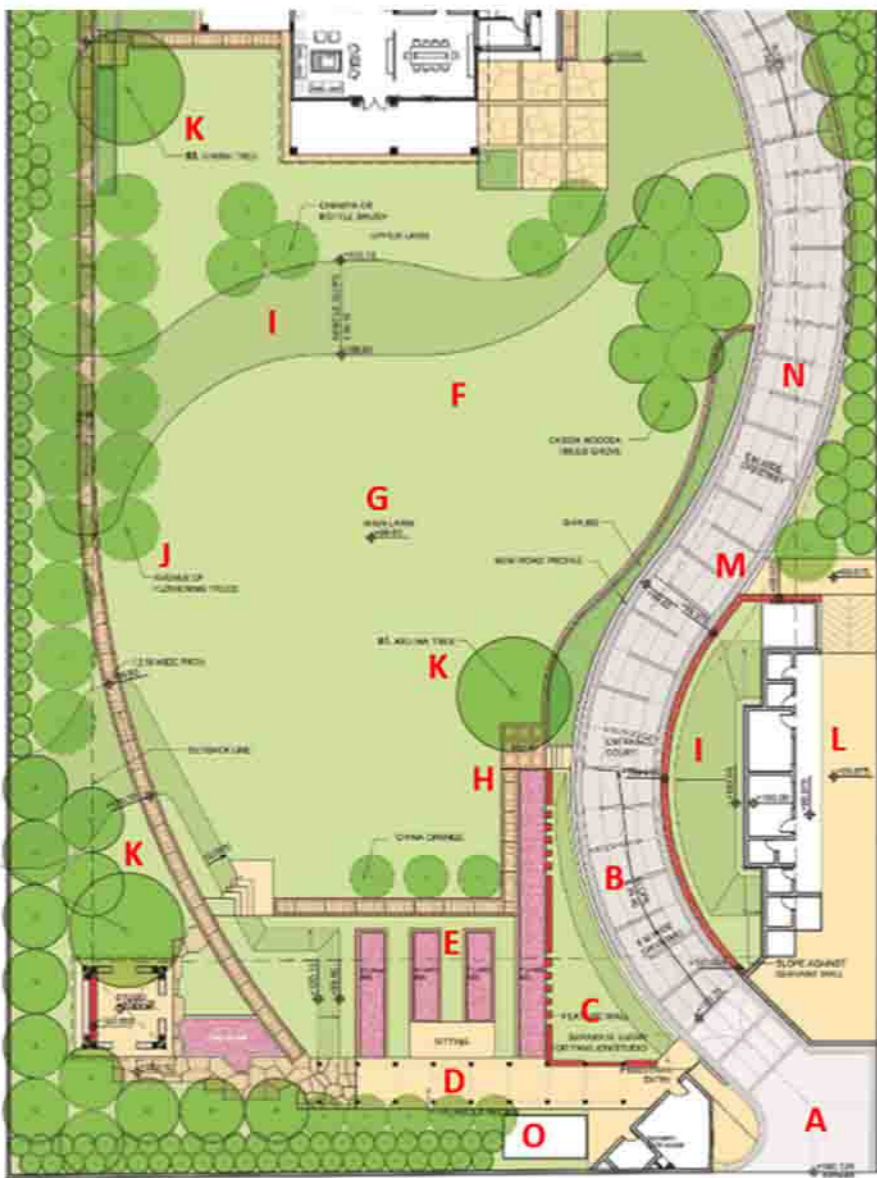
# 03 KHAN RESIDENCE- ELEVATION

Studio CoDe , Dec 2014 - June 2015.

Project Architect

The Four storey residence was an existing home to a joint family. Their residence elevation had issues to be addressed apart from the design perspective. Being on one of the busiest locations, the facade design is an approach to solve their problems with an aesthetic approach.



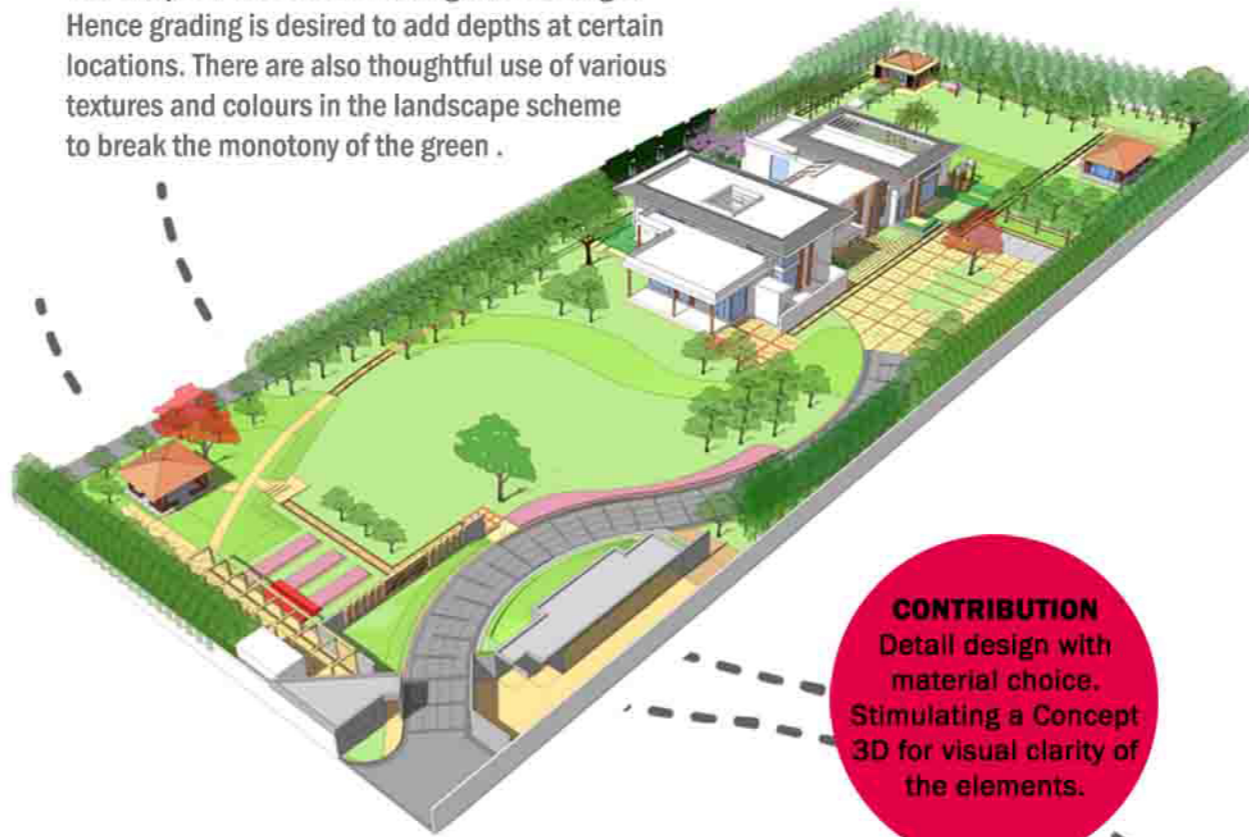


### Front Garden

- A. ENTRANCE
- B. ENTRY COURT
- C. FEATURE WALL
- D. STONE PERGOLA
- E. FLOWER GARDEN
- F. GARDEN PAVILLION
- G. FRONT GARDEN
- H. PARTY ENTRY
- I. GRASS SLOPE
- J. FLOWERING TREES
- K. LARGE TREES
- L. SERVANT'S QUARTER
- M. ENTRY FOR SERVANT'S
- N. ROAD
- O. D.G SET

### Farmhouse Garden

The shape of the site is an elongated rectangle. Hence grading is desired to add depths at certain locations. There are also thoughtful use of various textures and colours in the landscape scheme to break the monotony of the green .

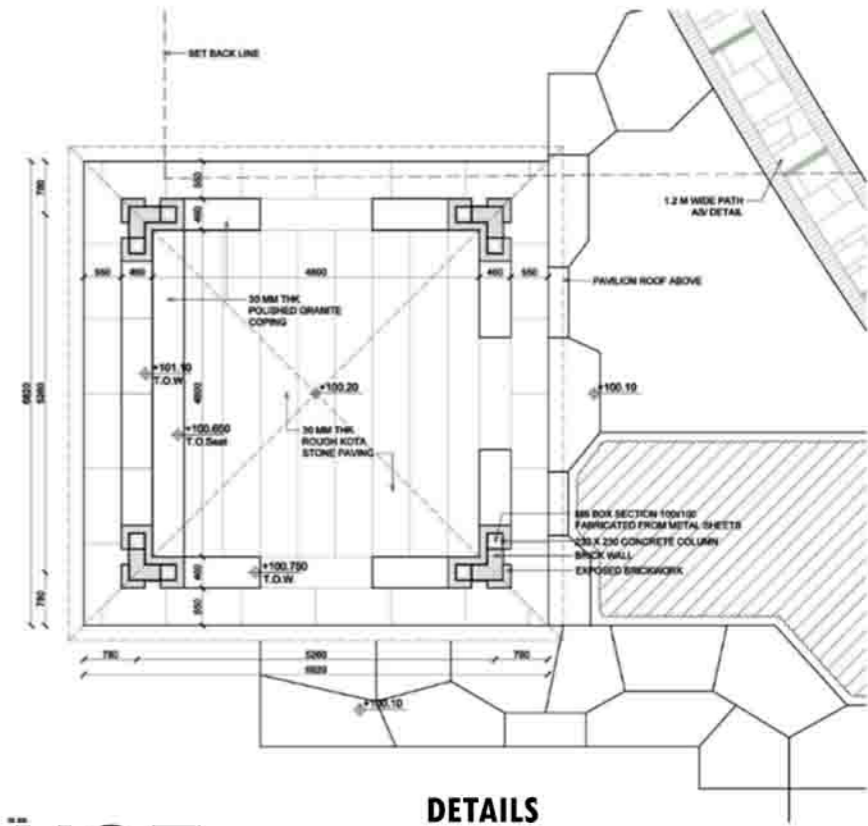
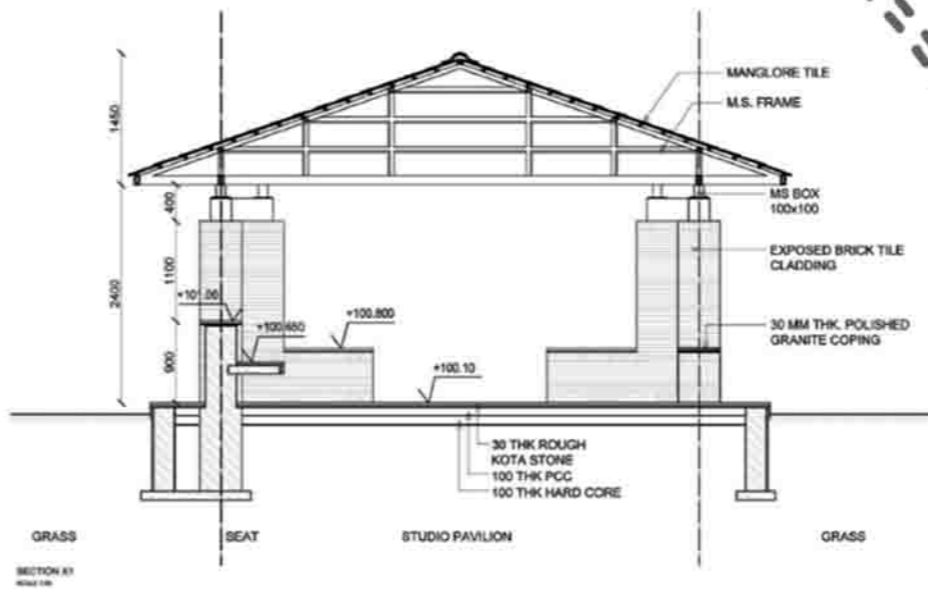


**CONTRIBUTION**  
Detail design with material choice. Stimulating a Concept 3D for visual clarity of the elements.



### Garden Pavillion

The garden pavillion on the front part of the lawn is a traditional sit out space with all sides open for enjoying the vistas around. Designed with mangalore tiles and brick tiles, the structure breaks the visual monotony giving the viewer a window of change.



# 04 NAYAR FARMHOUSE

Shaheer Associates , Dec 2015 - June 2015.  
Associate Architect

This project was a luxury retreat for a joint family . Since there was a large scope for landscape , it was a critical problem as well. The plot is clearly divided into parts and unified by the house. There are many Pavillions and Outdoor elements along with many Vista points from all angles.

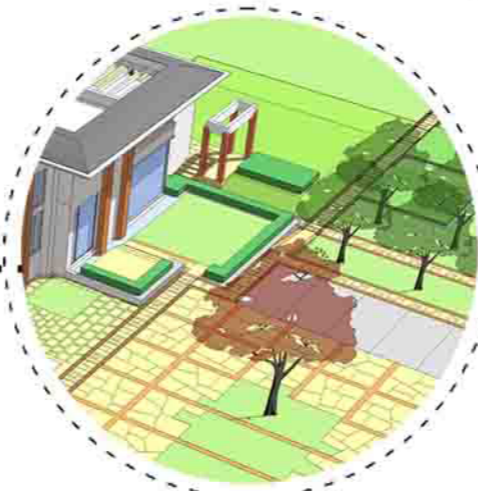
# Rear Garden

- A. ENTRANCE COURT
- B. ENTRY
- C. PARKING
- D. COURTYARD
- E. SWIMMING POOL
- F. RAISED LAWN
- G. MOTHER'S GARDEN
- H. VEGETABLE GARDEN
- I. ORCHARD
- J. MEDITATION PAVILLION
- K. DINNING PAVILLION
- L. WATER TANK
- M. STP



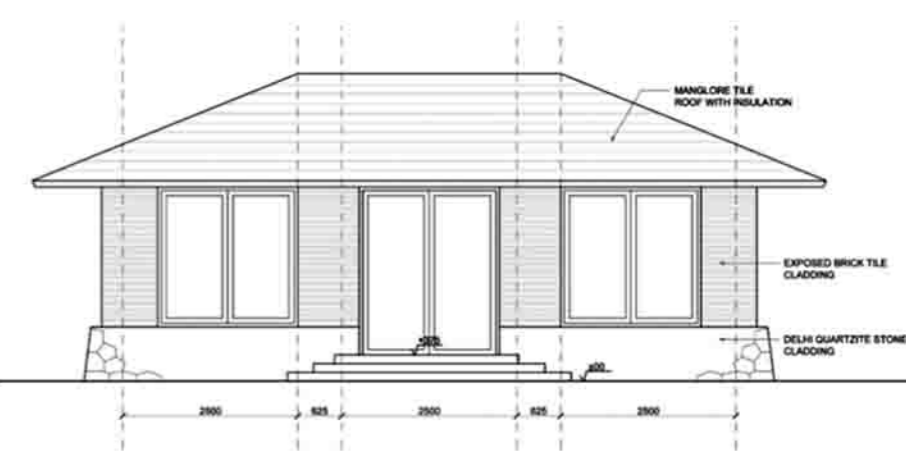
## Swimming Pool

The pool of the house marks the end of the built structure. There are two mounds on either side which merges with the greens.



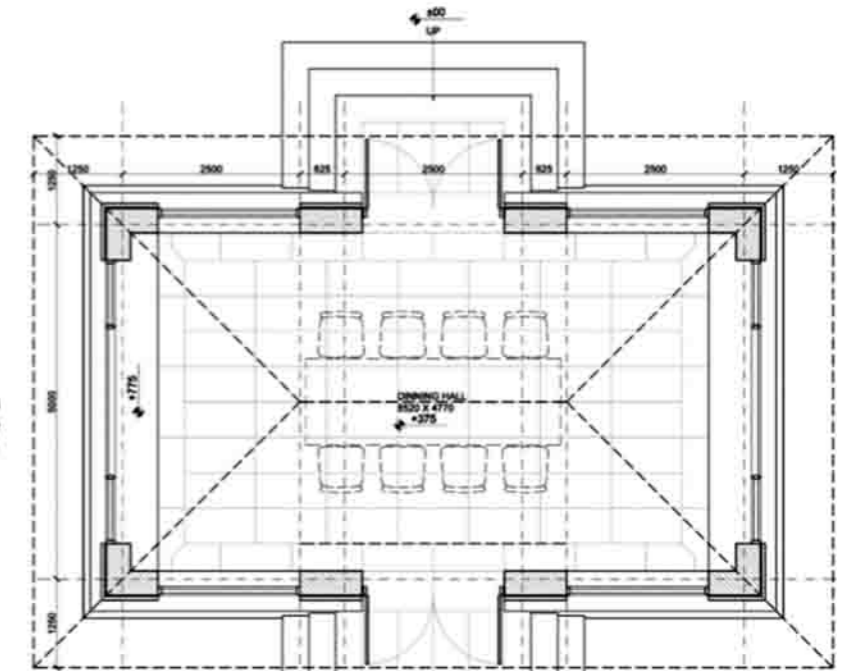
## Mother's Garden

The mother of the joint family had asked for a small private lawn beside her room, enclosed with shrubs.



## Dinning Pavillion

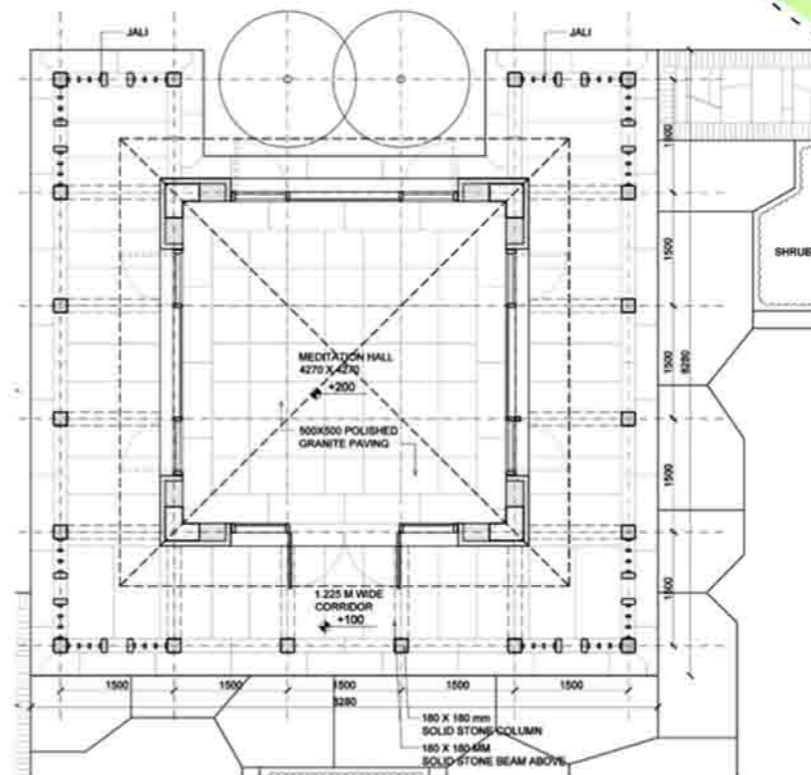
The dinning pavillion is on the rear part of the house with a similar vernacular touch. The symmetry of the structure gives a perfect proportion, with windows on all four sides for a 360 degree view. Also the elevated base of dressed quartzite gives a feel of strength to the structure.



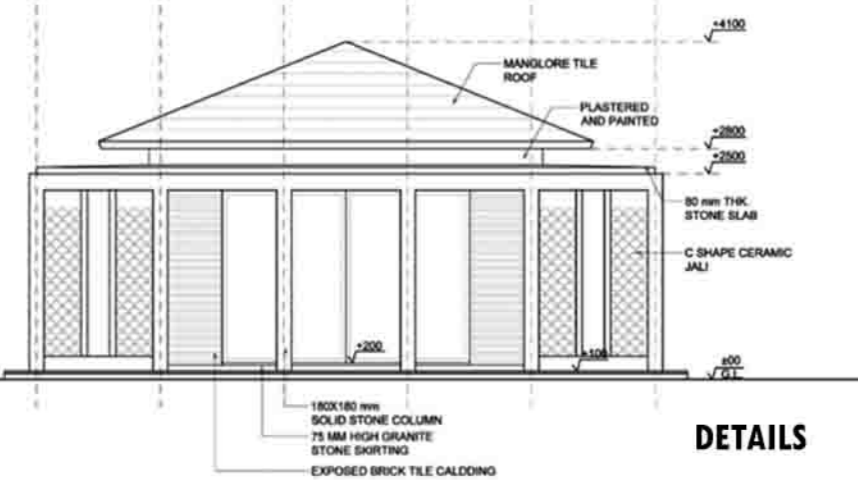
## DETAILS

## Meditation Pavillion

The meditation pavillion is on the rearest part of the house enclosed with a group of large trees. It giving it a feel of seclusion and peace. There are fish scale jali patterns on the outer verandah of the hall framed in timber posts.



## DETAILS





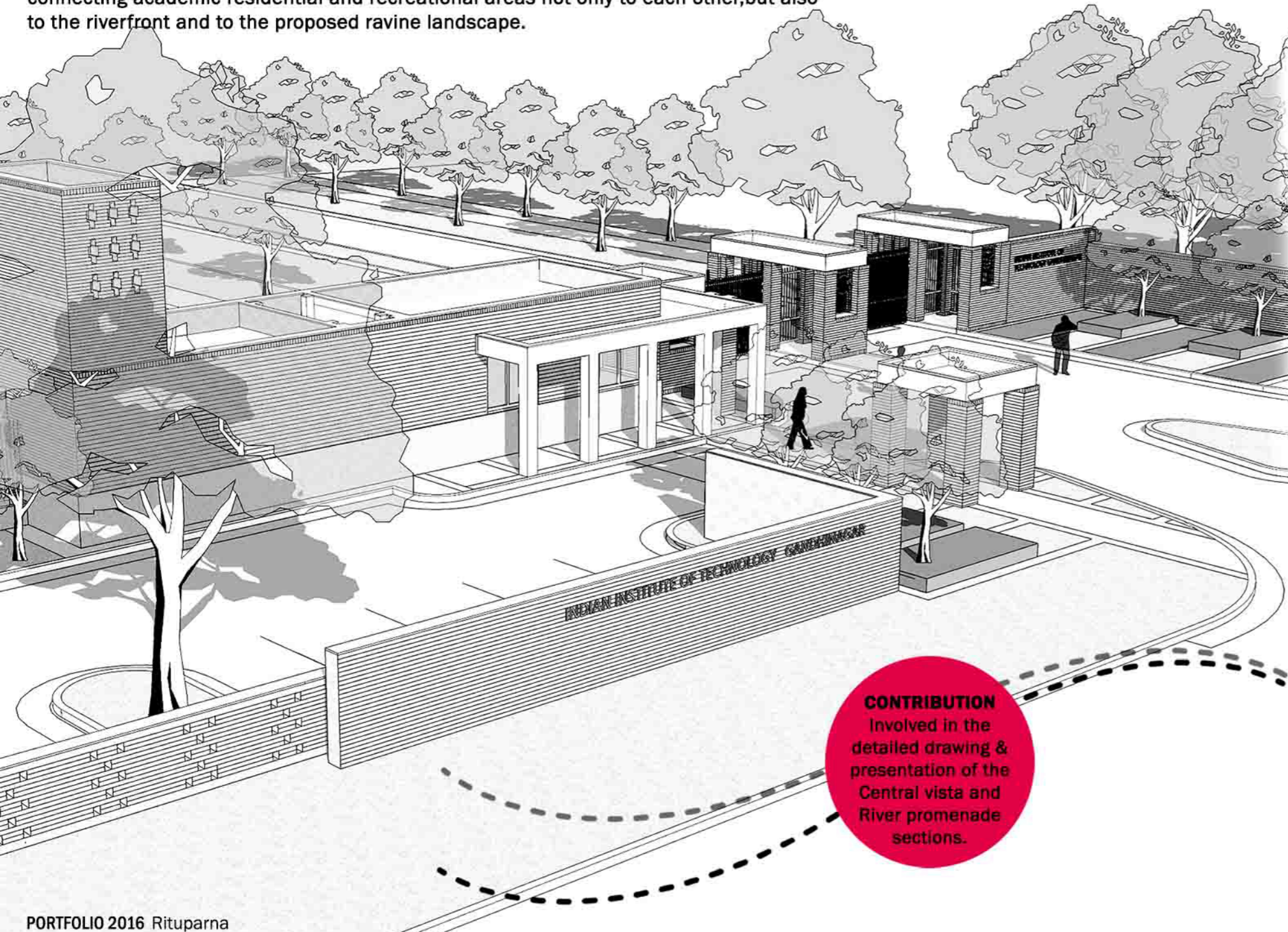
**LANDSCAPE MASTER PLAN**  
 The concept establishes a broad landscape structure for the proposed campus, a planned system of open spaces and vegetation that is visibly responsive to certain specific landscape qualities of the site. By isolating the development from the river, the plan also ensures minimum impact on the river and its ecosystem.

1. ENTRANCE DRIVE ALONG RAVINES
2. ENTRANCE COURT AND GARDEN
3. CENTRAL VISTA
4. SPORTS FIELDS
5. CONNECTING GREEN
6. RIVER PROMENADE
7. RAVINE LANDSCAPE



Part of the River Promenade with the Sabarmati along the HA-HA green border

Tree-shaded pedestrian footpaths would follow the alignment of this open space system, connecting academic residential and recreational areas not only to each other, but also to the riverfront and to the proposed ravine landscape.



**CONTRIBUTION**  
 Involved in the detailed drawing & presentation of the Central vista and River promenade sections.

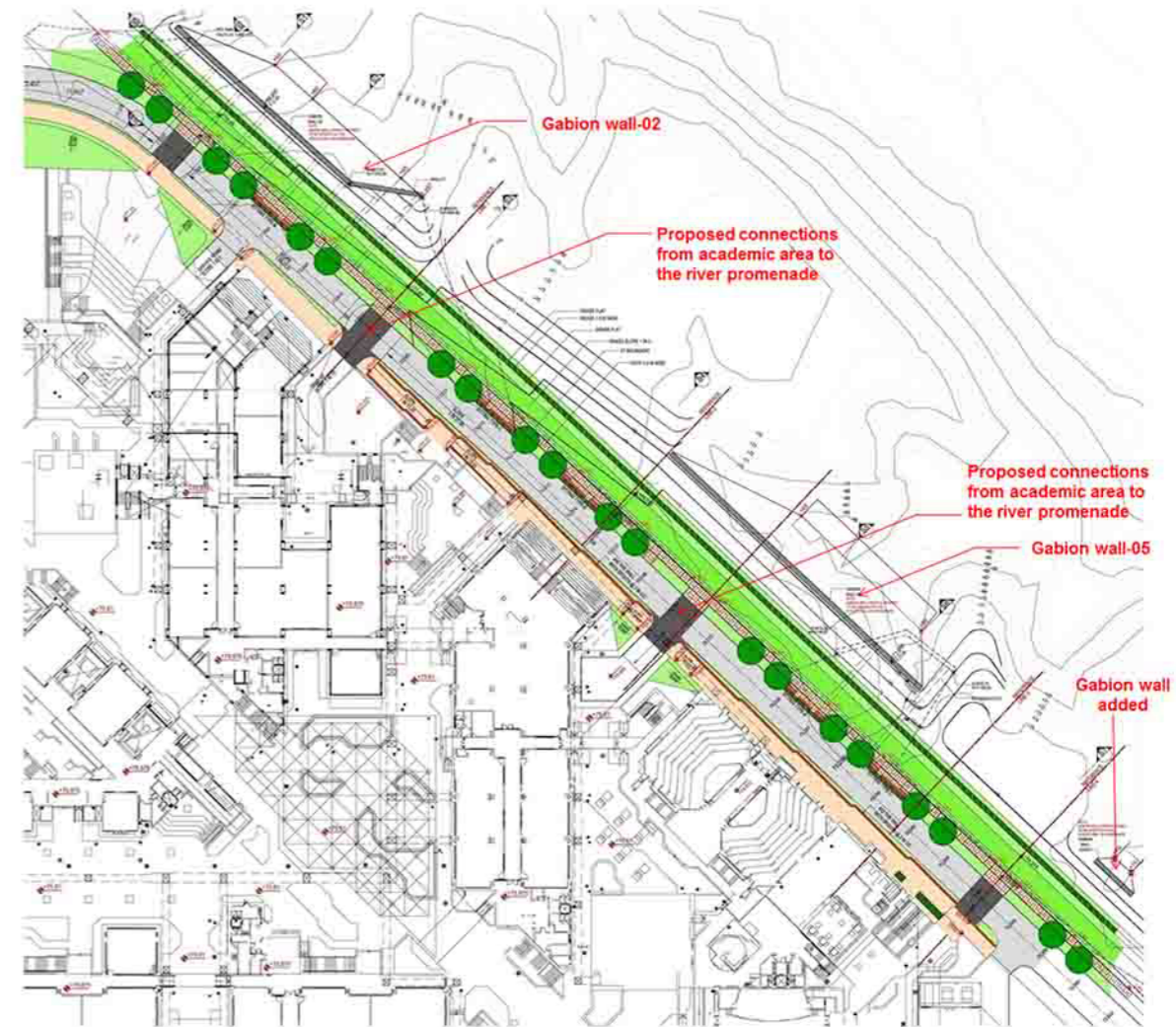
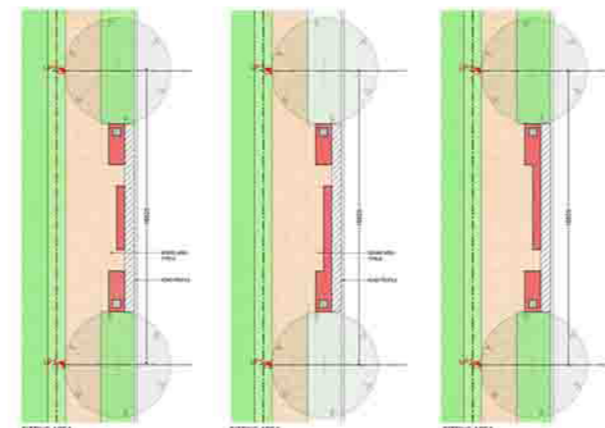
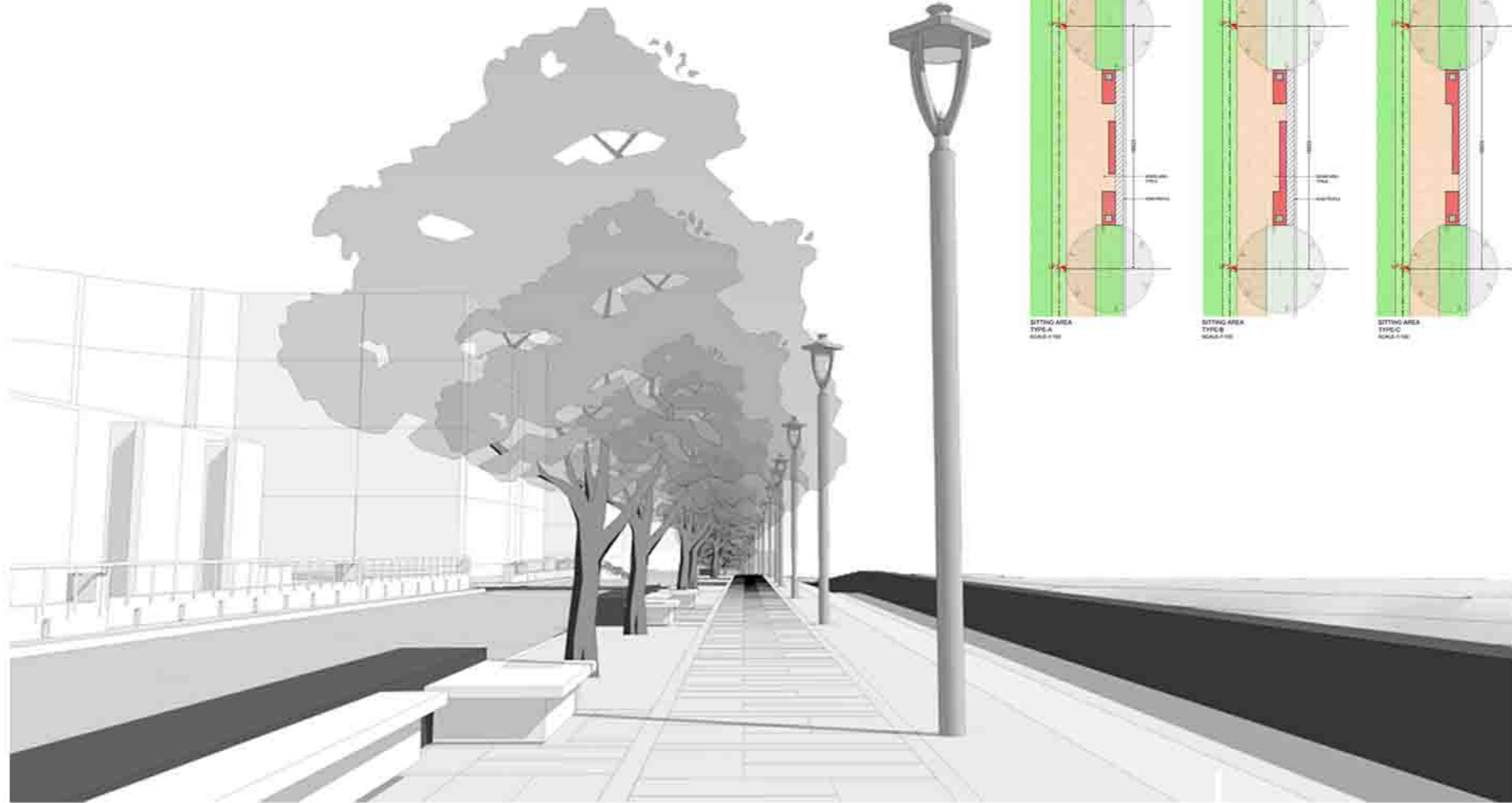
# 05 IIT- GANDHINAGAR

Shaheer Associates, Dec 2015 - Aug 2016.

Assistant Architect

The Indian Institute of Technology is one of the premier institutes of the country. The scope of work involved giving the concept development of all the landscape patches of the entire campus, including the design of the walkways and boundaries of the institute.





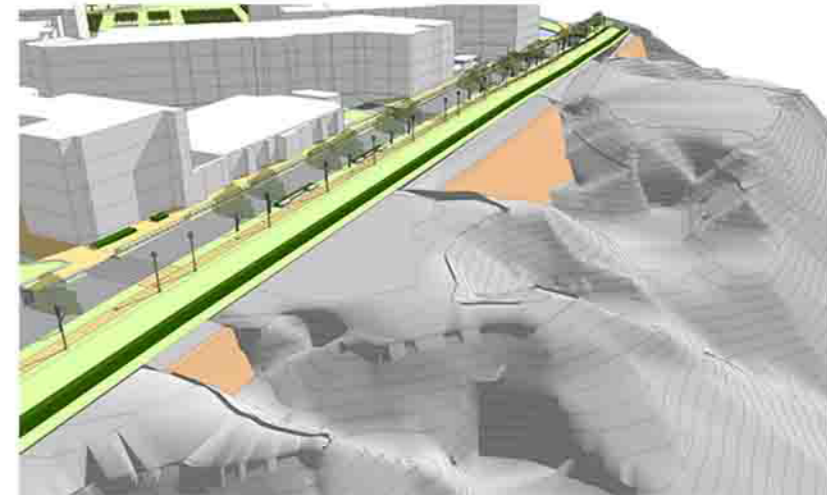
Boundary is in the form of HA- Ha by developing the area adjacent to the boundary

River Promenade Detail



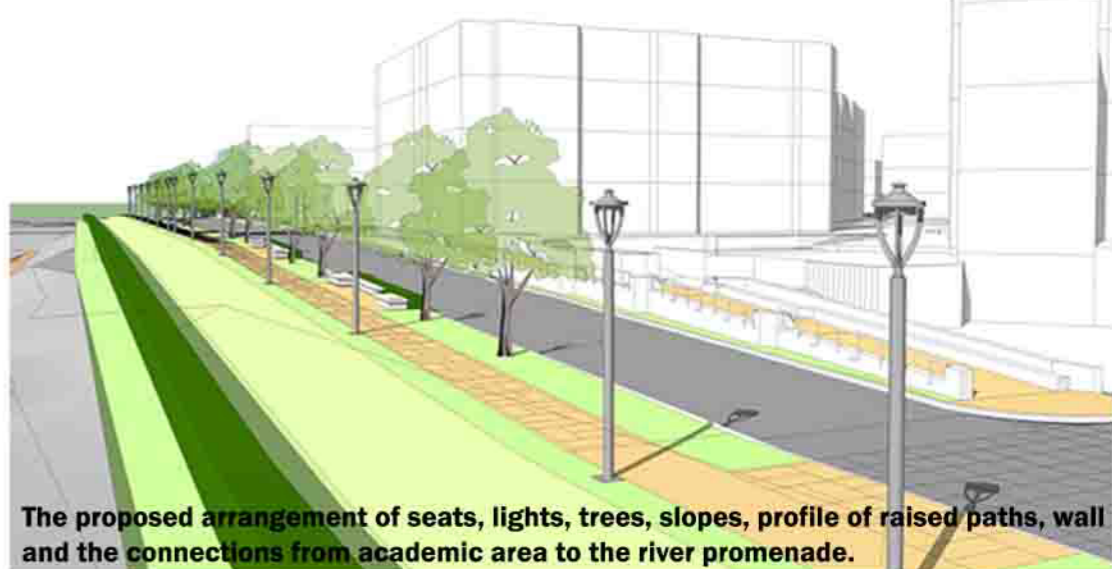
Landscape Idea

The Landscape structure as shown in the drawing therefore comprises a range of open spaces arranged as a visually intersecting and varied network to facilitate comfortable and unhindered movement of people on foot.



Central Vista and River Promenade

The Central Vista is a single axis which runs parallel to the intersection of roads to give a single unblocked vision of the Sabarmati River, along which is the River Promenade.



The proposed arrangement of seats, lights, trees, slopes, profile of raised paths, wall and the connections from academic area to the river promenade.

# NATIONAL INSTITUTE OF DESIGN

Year 4

Location : Bhubaneswar  
 Area : 40,650 msq  
 Program : Educational Institute

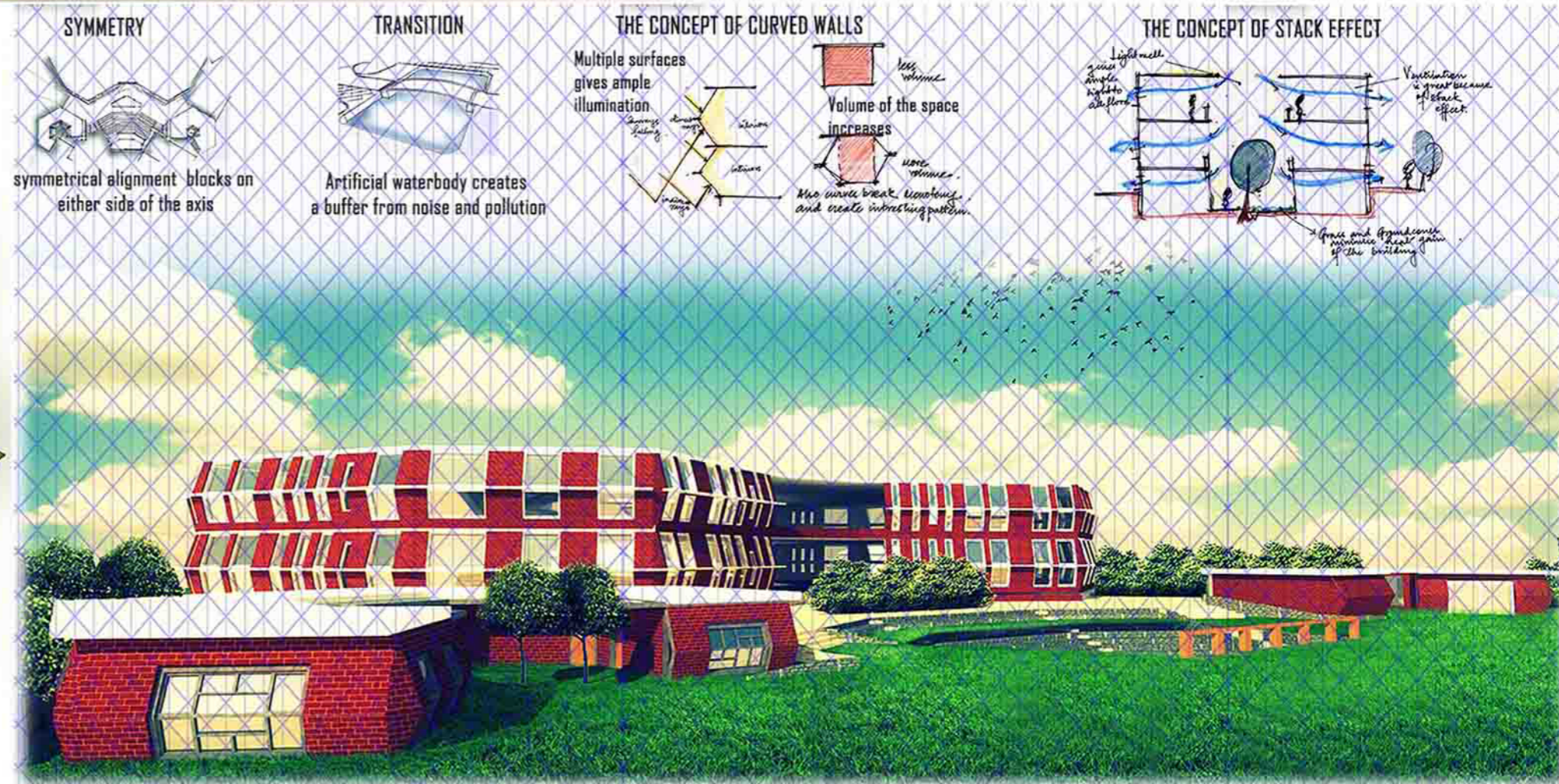
Brief : The site in question is a 10 acre land in close proximity to Patia. The design mainly focuses on creating a campus with an interlocking network of classrooms, studios and workshops. The theme of the design of the campus is balanced on a twofold objective.

- Creating a unique identity of the space inspiring creativity, away from the hustle bustle of the city

-An inclusive design approach



CAMPUS MASTERPLAN with landscaping scheme



## FLOOR PLAN



VIEW OF THE REAR COURTYARD

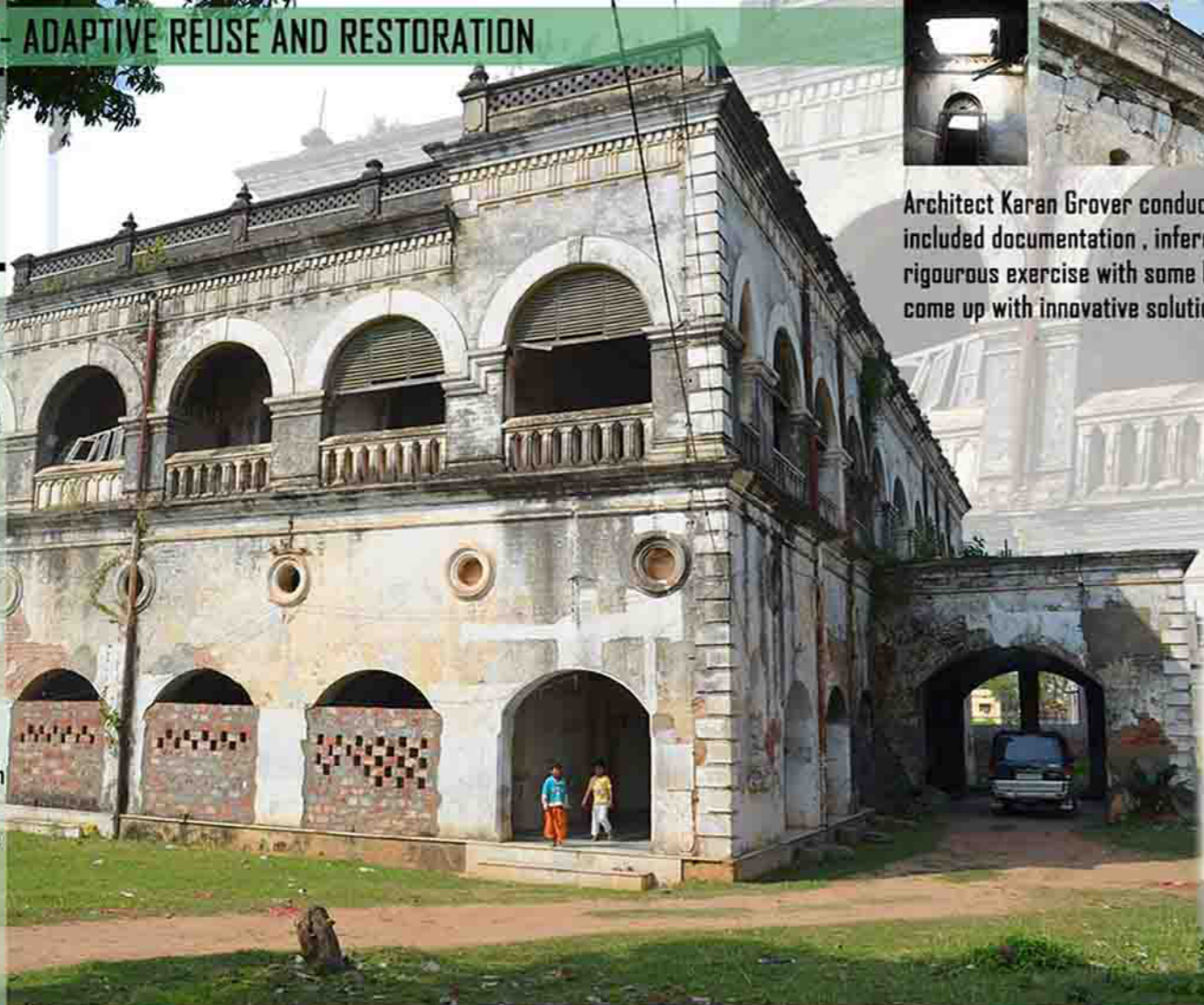
# KANIKA PALACE- ADAPTIVE REUSE AND RESTORATION

Year 3

Location : Cuttack  
Area : 3,607 msq  
Program : Adaptive Reuse of an ancient palace

**Brief :**  
The **Kanika Palace**: built about 125 years ago, a rich architectural specimen of elegance and grandeur and richness of the Bhanjdeo dynasty. After 125 years the palace still lies there, unfortunately losing its significance.

The documentation intends to evaluate synthesize the probabilities to conserve the architectural heritage value of the iconic Kanika palace through Adaptive Re-use by reinstating the structure into a sustainable activity centre comprehending to its present context.

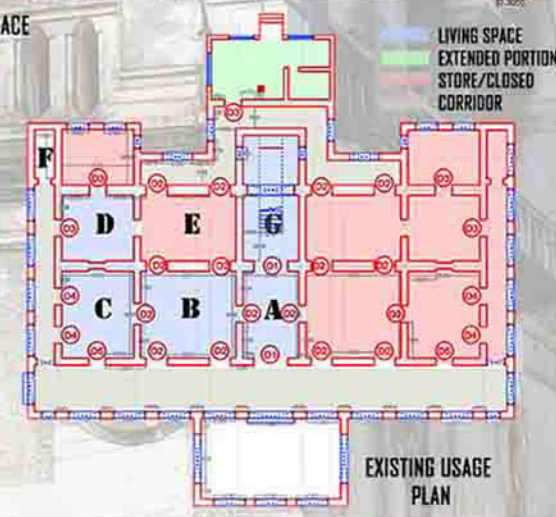


Architect Karan Grover conducted the workshop in a time span of three days which included documentation, inference and solution supported with presentations. It was a rigorous exercise with some brilliant insights by the architect which helped us to come up with innovative solutions.



-TOTAL SITE AREA: 3607 SQ.M.  
-BUILT UP AREA OF THE BUILDING : 1494 SQ.M.  
-GROUND COVERAGE OF THE BUILDING : 21%  
-AREA OCCUPIED BY THE TEMPLE COMPLEX : 546 SQ.M.

FRONT ELEVATION OF KANIKAPALACE



EXISTING USAGE PLAN

ANALYSIS AND PICTORIAL REFERENCES OF THE PRESENT USE AND CONDITION OF THE ROOMS IN THE PALACE.



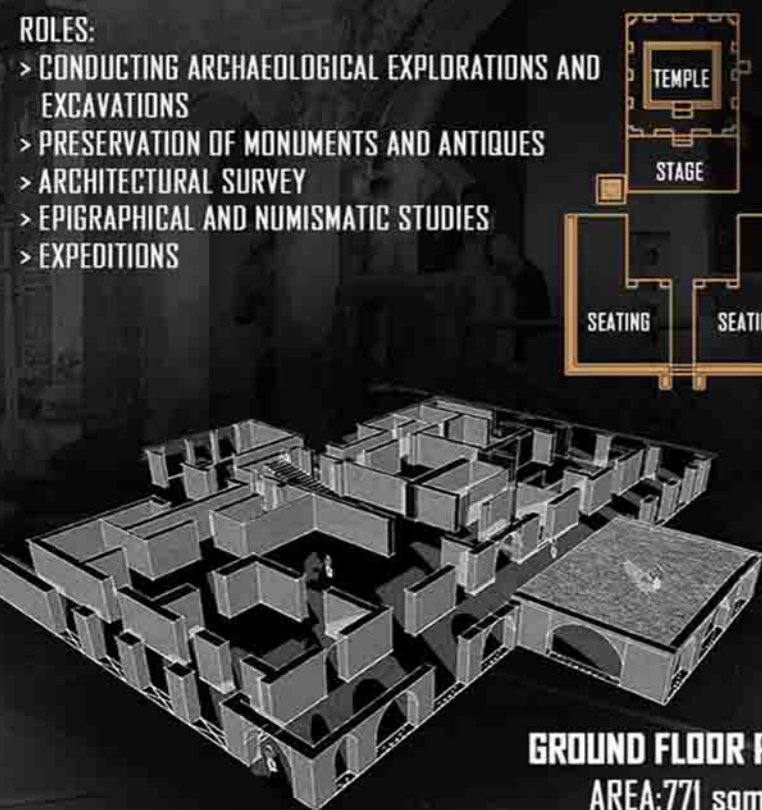
## THE REVIVAL PROPOSAL- ARCHAEOLOGICAL SURVEY OF INDIA-ODISHA BRANCH

THE ARCHAEOLOGICAL SURVEY OF INDIA UNDER THE MINISTRY OF CULTURE IS A PREMIER ORGANISATION FOR THE ARCHEOLOGICAL RESEARCHES AND PROTECTION OF THE CULTURAL HERITAGE OF THE NATION

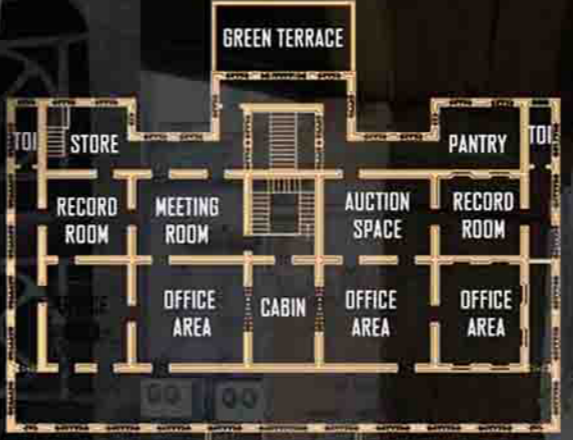
- ROLES:**
- > CONDUCTING ARCHAEOLOGICAL EXPLORATIONS AND EXCAVATIONS
  - > PRESERVATION OF MONUMENTS AND ANTIQUES
  - > ARCHITECTURAL SURVEY
  - > EPIGRAPHICAL AND NUMISMATIC STUDIES
  - > EXPEDITIONS



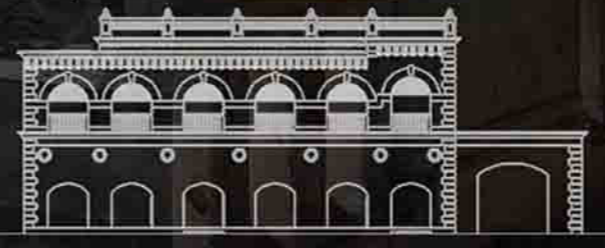
VIEW OF THE DISPLAY AREA



GROUND FLOOR PLAN  
AREA: 771 sqm

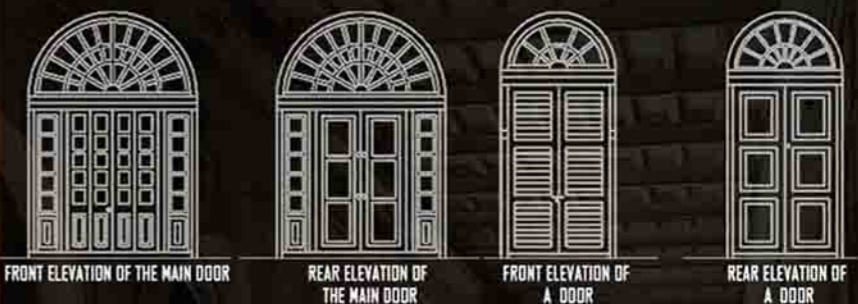


FIRST FLOOR PLAN  
AREA : 723sqm



SIDE ELEVATION

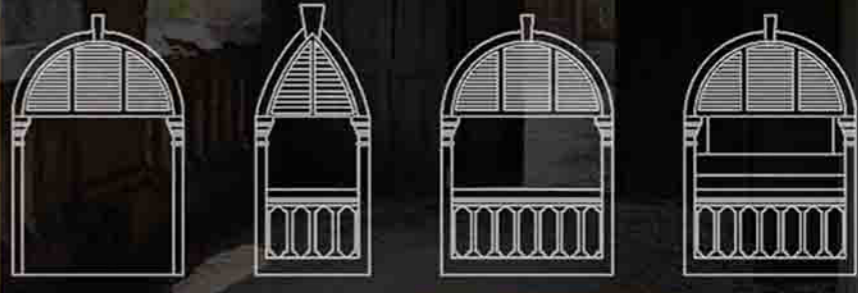
DOORS



- DOUBLE SHUTTER DOORS.
- GLASSES WERE USED IN BOTH THE SHUTTERS
- LOUVERS WERE USED IN THE DOORS AS NO WINDOWS WERE PRESENT



ARCHES



There are almost ten varieties of arches in the entire palace. Here are some examples shown.

